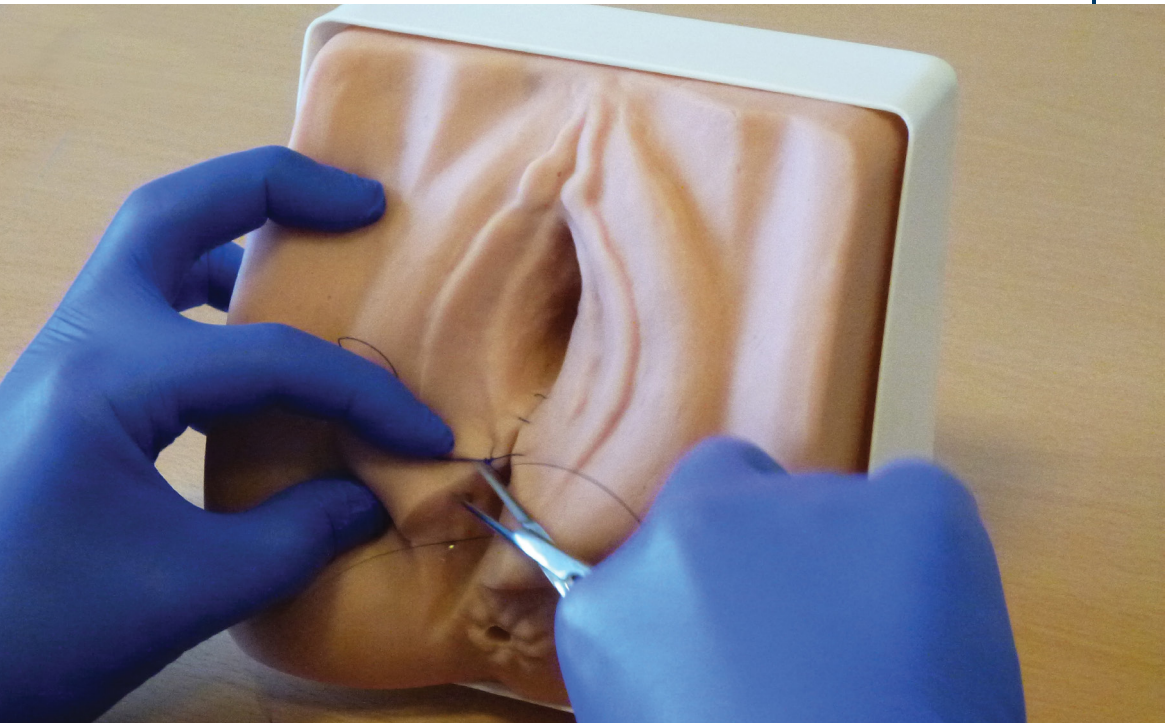


# Adam, Rouilly

SERVING MEDICAL EDUCATION WORLDWIDE

## AR312 EPISIOTOMY SUTURING/PERINEAL REPAIR TRAINER

Instruction Manual



Thank you for purchasing this AR312 Episiotomy Suturing/Perineal Repair Trainer.

Please read this instruction manual carefully and retain it for future reference.

## Skills

- Repair of a right mediolateral incision
- Handling and knot tying

## Features

- Accurate, life size anatomy with all relevant landmarks
- Improved material gives highly realistic feedback during suturing
- Open rectum for digital assessment and verification that the bowel has not been sutured
- Suited to deep muscle, subcutaneous and superficial suturing techniques
- Reinforced layer allows for repeated procedures to be performed
- Suction feet for easy, stable securement to work surface

## Safety and Precautions



After each use, sutures must be removed from the model. Leaving the model sutured for prolonged periods may cause damage, decrease durability and invalidate your guarantee.



Remove sutures very carefully after each use. If instruments are used, be certain not to cut into or tear the skin of the model.

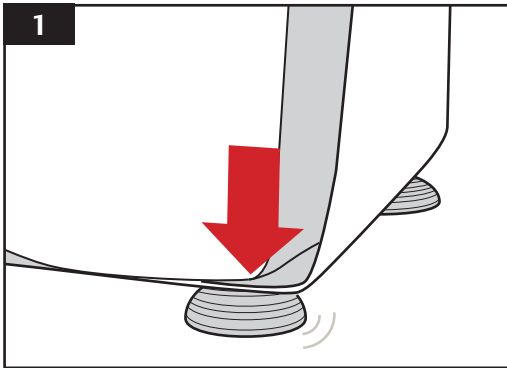
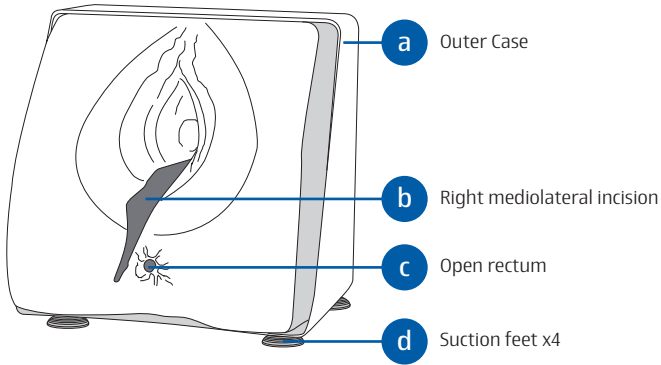


This simulator is a non-serviceable item and will need to be disposed of, in accordance with local policy, after a period of use.



Please treat the simulator with the same care you would a patient.

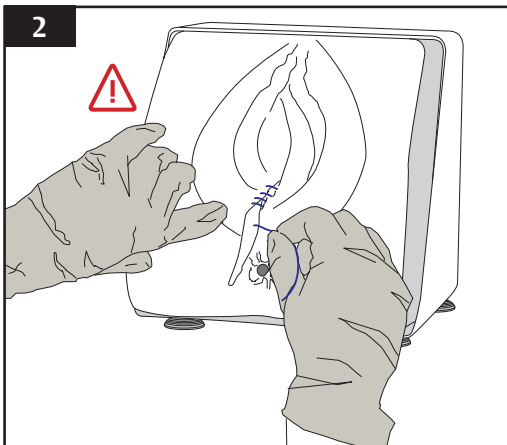
## Parts



## Before Use

Place the model on a stable, flat surface


Secure in place by using all 4 suction feet to fix to the surface.



## After Use

After training, sutures must be removed.

Remove sutures carefully, being certain not to rip or tear the skin of the model.

 Leaving the model sutured for prolonged periods may cause damage, decrease durability and invalidate your guarantee.

For enhanced realism this product is made from a lifelike material with limited a life span. This product is not covered by Adam,Rouilly's standard 2 Year Guarantee as the useful life of the product is determined by individual customer use.

This simulator is a non-serviceable item and will need to be disposed of, in accordance with local policy, after a period of use. The plastic outer case is made from fully recyclable material.

# Adam,Rouilly

As part of our policy of continual product development, the specification of products may alter without prior notice.

Adam,Rouilly has over 100 year's experience in providing quality medical models and simulators.

Should you require any further information please contact our Sales Department who will be pleased to help with your enquiry.

Adam,Rouilly Limited  
Castle Road  
Eurolink Business Park  
Sittingbourne  
Kent  
United Kingdom  
ME10 3AG

T: +44(0)1795 471378  
F: +44(0)1795 479787  
E: [sales@adam-rouilly.co.uk](mailto:sales@adam-rouilly.co.uk)  
[www.adam-rouilly.co.uk](http://www.adam-rouilly.co.uk)