



USER GUIDE



KNEE ASPIRATION & INJECTION TRAINER WITH ULTRASOUND CAPABILITIES

This product is available
in light and dark skin tones

70103

70114

FOR MORE SKILLS TRAINING PRODUCTS VISIT

limbsandthings.com

Sussex Street, St Philips, Bristol, BS2 0RA, UK | sales@limbsandthings.com | +44 (0) 117 311 0500

INDEX

PACKAGE SUPPLIED	3
SAFETY & CLEANING INSTRUCTIONS	4
SET UP	5
• PLUGGING IN THE 2 LEG SUPPORTS	5
• INSERT THE ULTRASOUND KNEE MODULE	5
• FILLING THE FLUID BAG WITH SYNOVIAL FLUID	6
• CONNECTING THE KNEE TO THE FLUID BAG	7
CARE & MAINTENANCE	9
• EMPTYING THE SYNOVIAL FLUID FROM THE KNEE	9
• REMOVING/RE-ATTACHING THE FLUID BAG	11

TAKE A LOOK
AT OUR **VIDEO**



VISIT THE WEBSITE
limbsandthings.com

OR YOUTUBE CHANNEL
youtube.com/limbsandthings

PACKAGE SUPPLIED

Ultrasound Knee Module

70104 **70115**



Leg unit
(including removable supports)

70105 **70116**



Fluid Bag & Stand

70106



Synovial Fluid (including syringe)

70107



Needle Set

70108



Carry Case



YOU WILL NEED (NOT SUPPLIED)

Linear Probe



Ultrasound Gel



SAFETY & CLEANING INSTRUCTIONS

READ THE SAFETY INSTRUCTIONS CAREFULLY BEFORE USING YOUR KNEE ASPIRATION & INJECTION TRAINER

DO's



Follow all instructions. Keep these instructions. Heed all warnings. Handle with care.

Use needles provided or near new needle of 21 gauge.



Refer all servicing to qualified service personnel. Servicing is required when the apparatus has been damaged.

Clean the product with a damp soft cloth or sponge, using only warm water with mild detergent.



DON'Ts



Do not install near any heat sources, do not expose the product to flames or use near naked flame sources. Do not use flammable solvents near or on this product.

Do not use any attachments other than those supplied by the manufacturer.



Do not disassemble the product or attempt to repair a faulty unit, please return the product to Limbs & Things for assessment and repair.

Do not use if the skin is torn.



STORAGE & TRANSPORTATION



Always ensure that the products are properly packed and secured during transportation and storage in order to prevent personal injury or damage to the product.



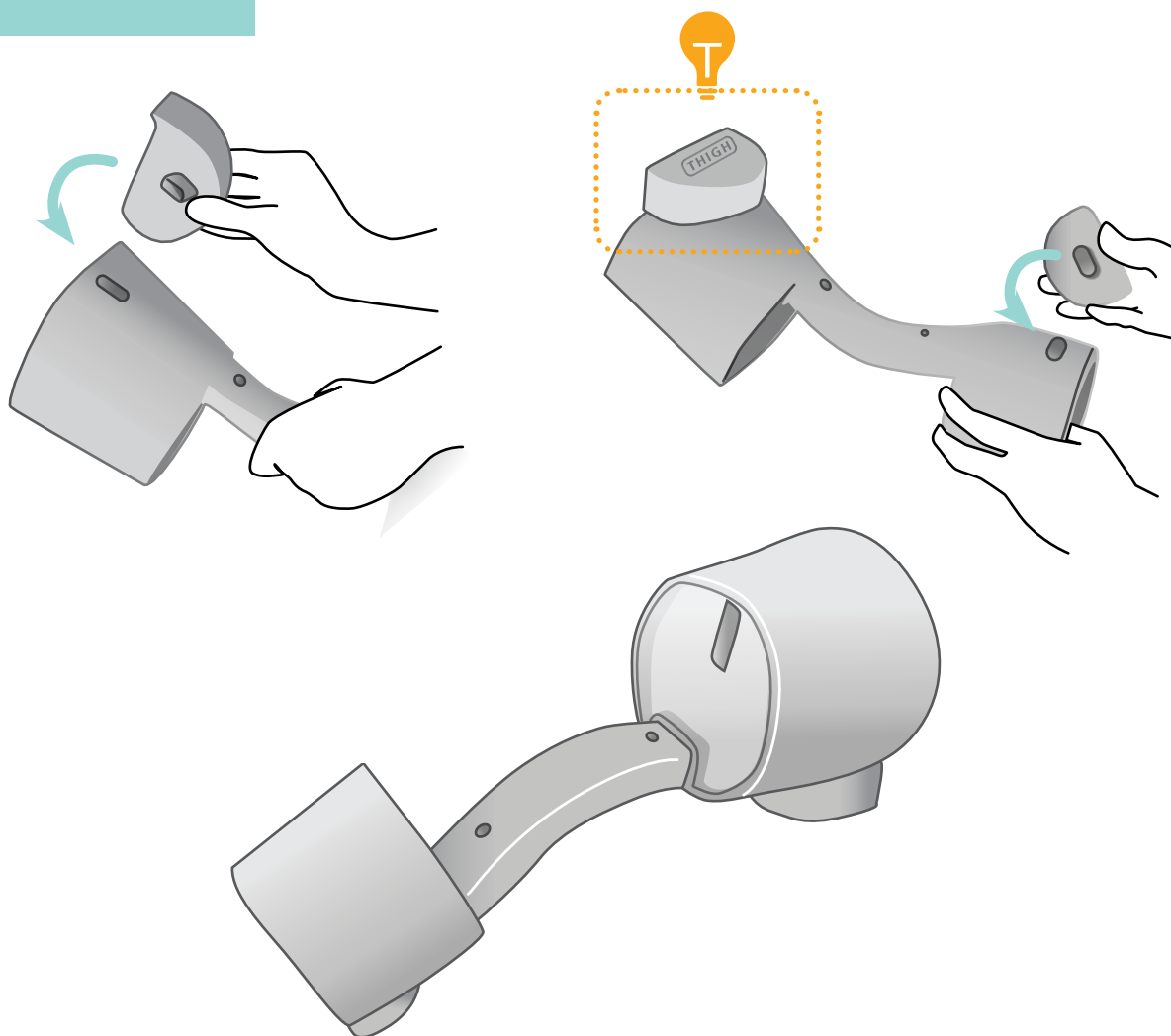
Empty the fluid from the Knee before storing.



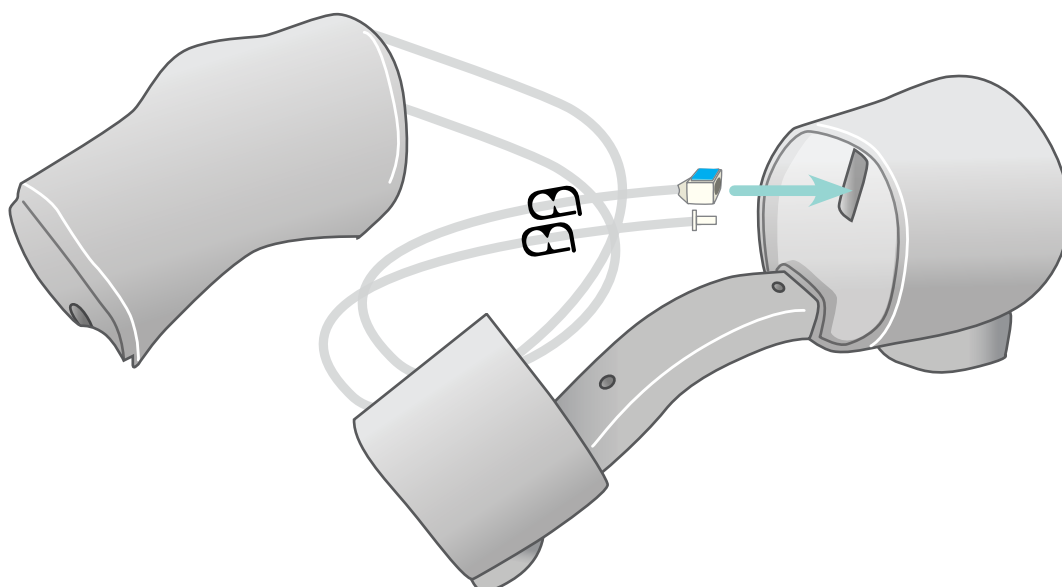
When practicing injecting be careful to remove the needle in the same straight line as the injection. Removing the needles at an angle or dragging the needle on the skin can cause the knee skin to split.

SET UP

PLUGGING IN THE 2 LEG SUPPORTS



INSERT THE ULTRASOUND KNEE MODULE

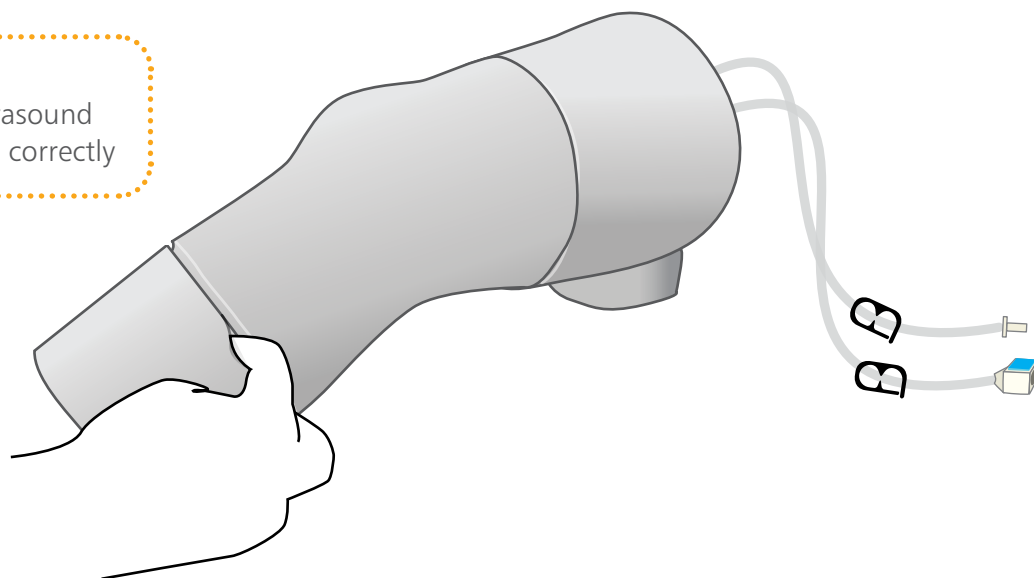


SET UP

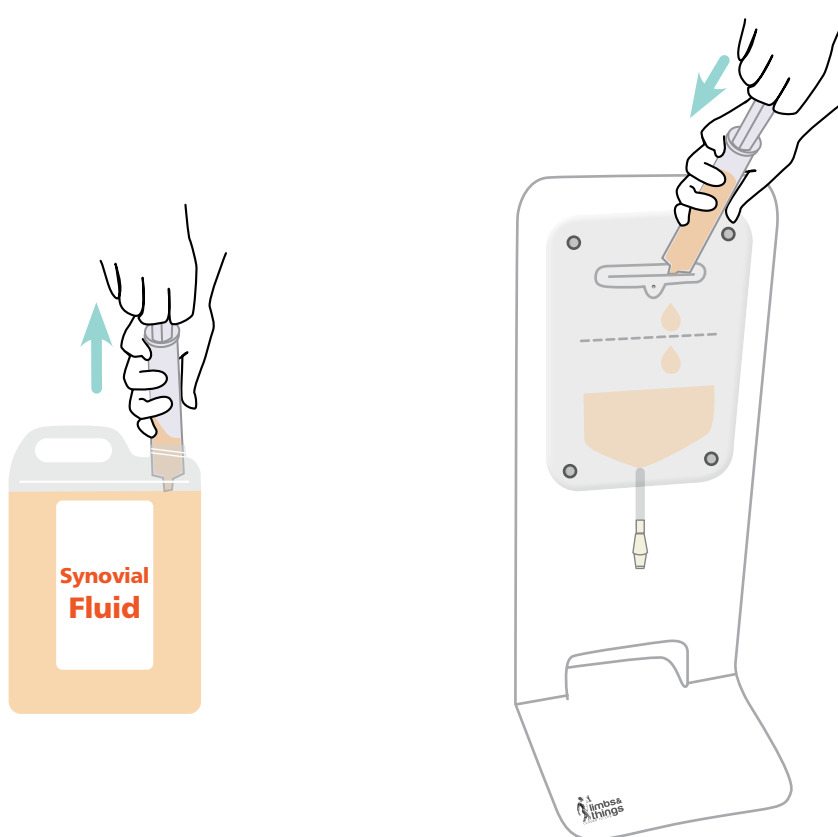
INSERT THE ULTRASOUND KNEE MODULE



Ensure that the Ultrasound Knee Module is fitted correctly

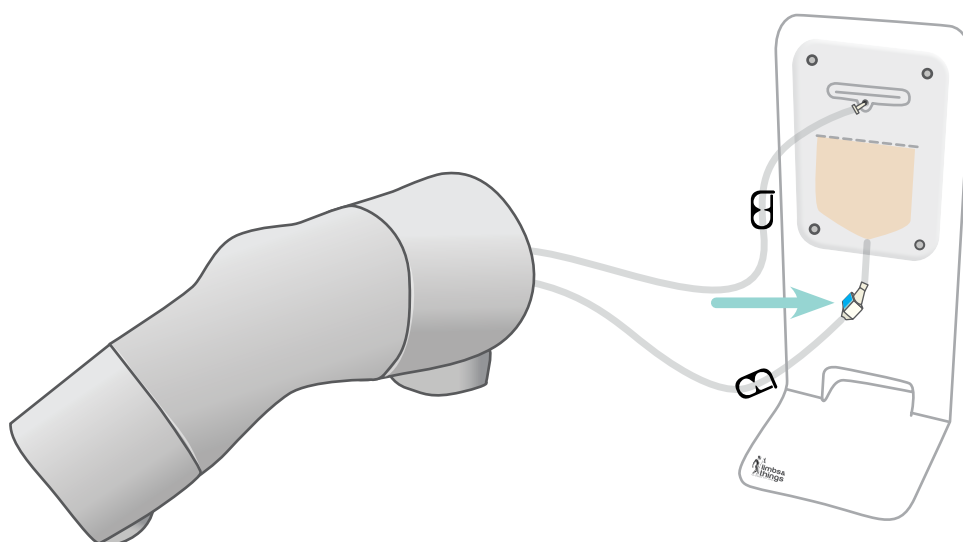
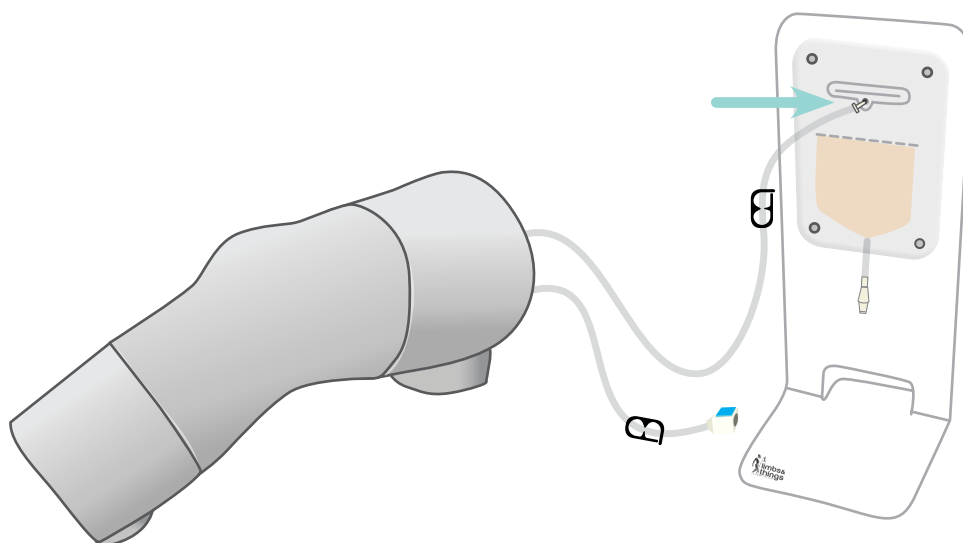
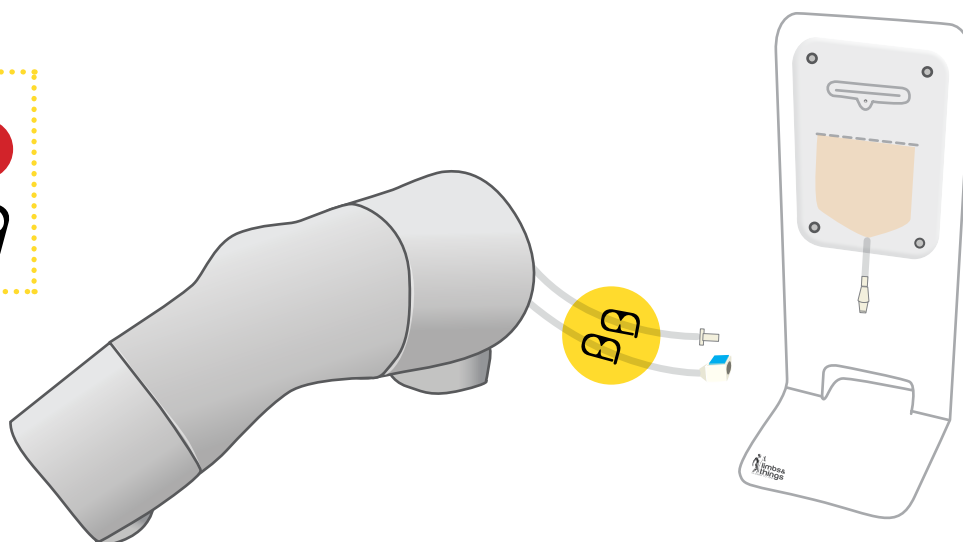
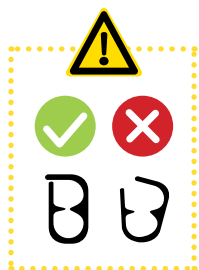


FILLING THE FLUID BAG WITH SYNOVIAL FLUID



SET UP

CONNECTING THE KNEE TO THE FLUID BAG

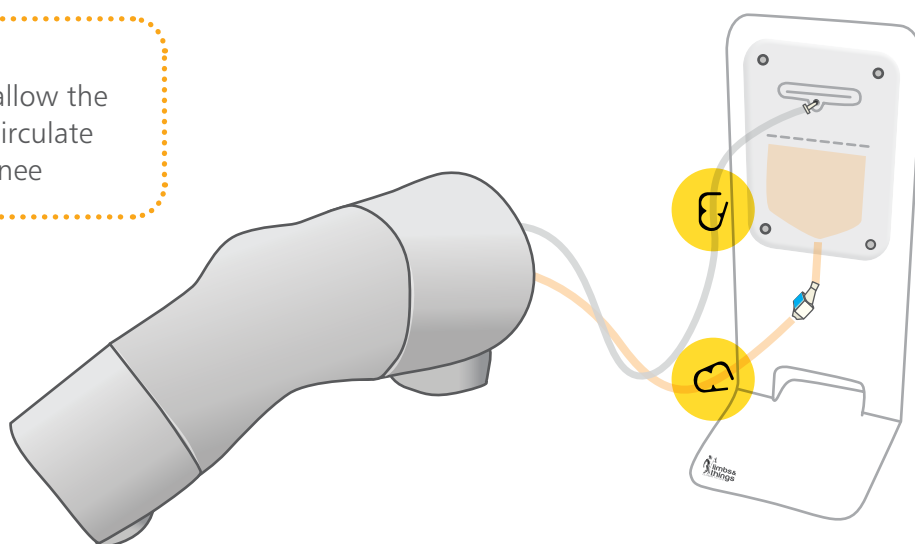


SET UP

CONNECTING THE KNEE TO THE FLUID BAG



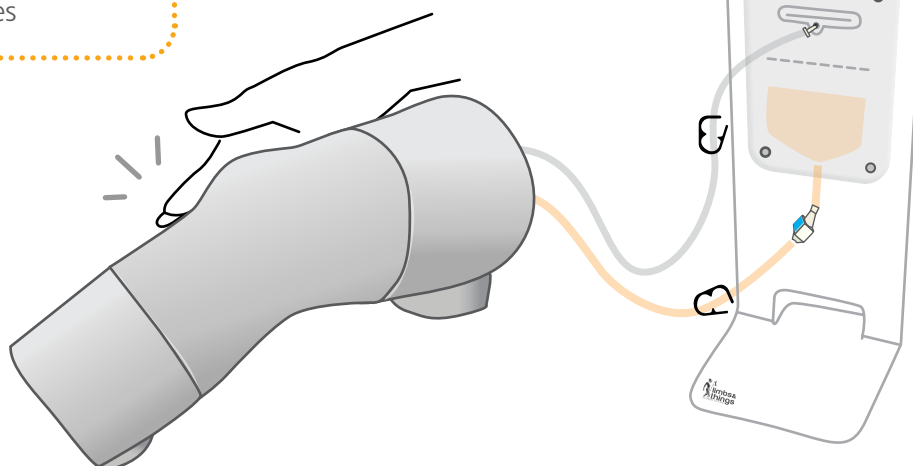
Open the clips to allow the synovial fluid to circulate around the Knee



After a couple of minutes, the Knee should be primed and ready to use



Gently tap the side of the Knee once it is primed to remove any air bubbles



If using the Knee **to aspirate fluids**, ensure that once the Knee is filled with fluid, the clips on both tubes are closed

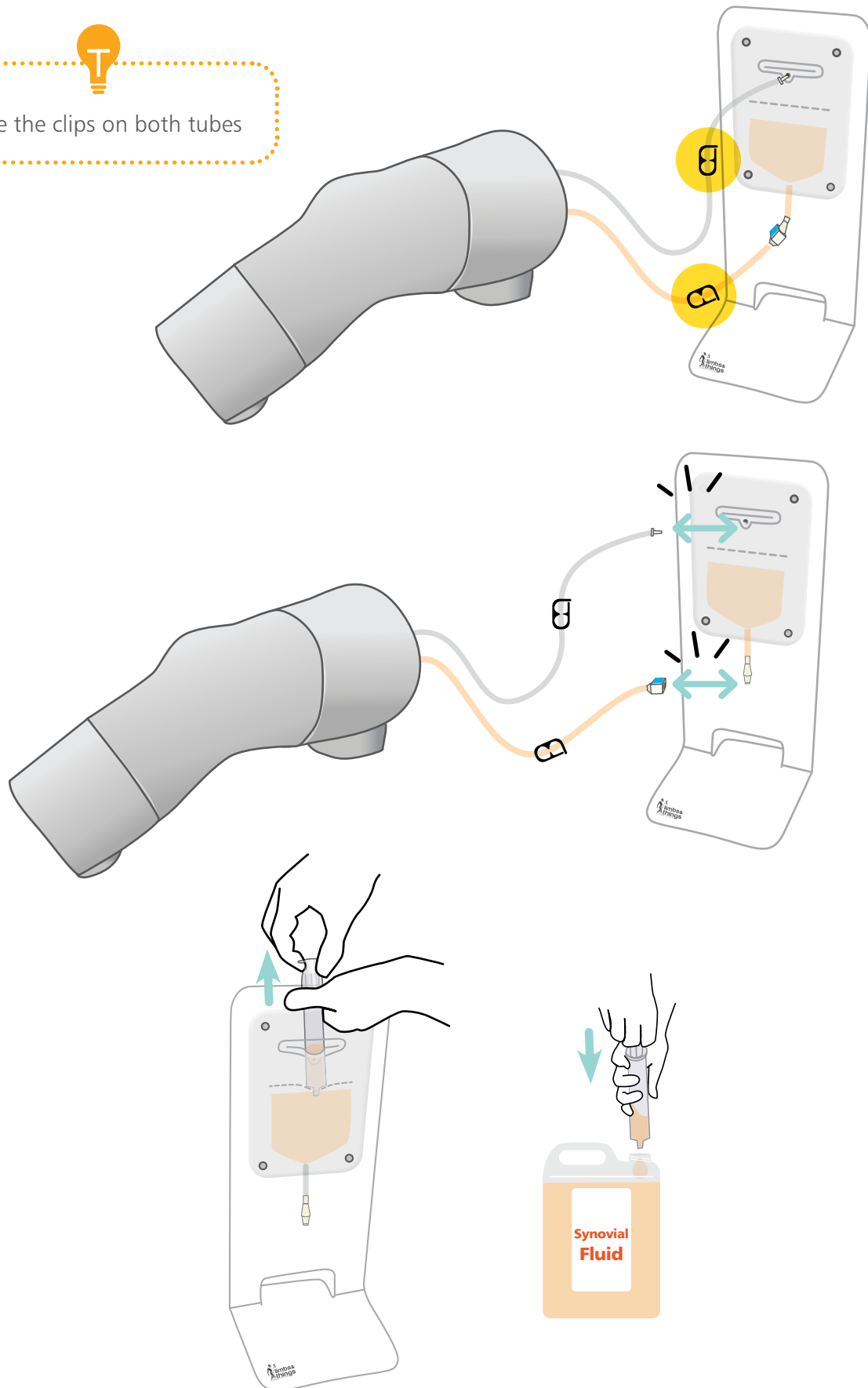
B

CARE & MAINTENANCE

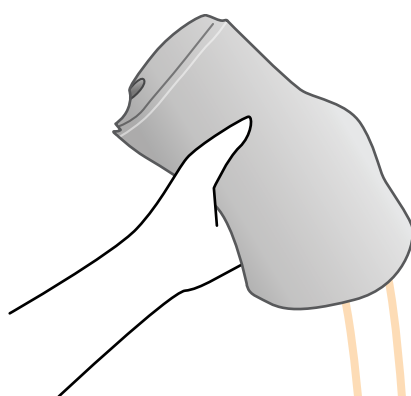
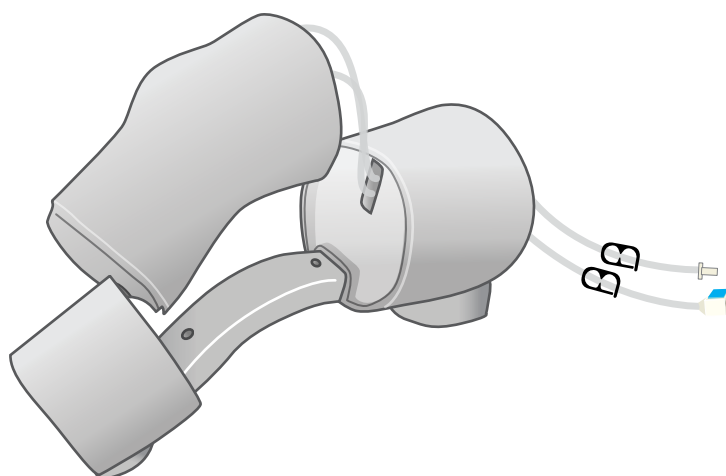
EMPTYING THE SYNOVIAL FLUID FROM THE KNEE



Close the clips on both tubes



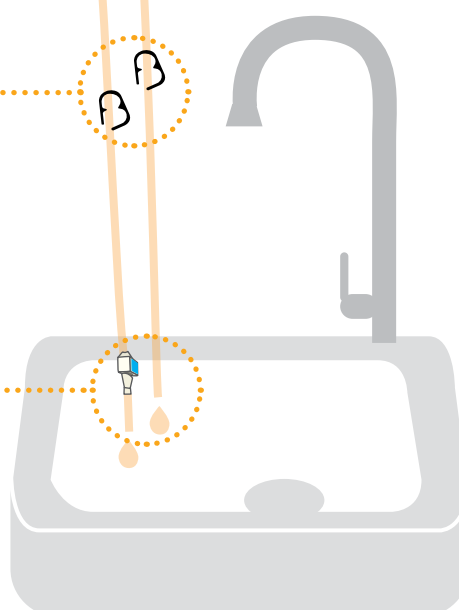
EMPTYING THE SYNOVIAL FLUID FROM THE KNEE



Open the clips on both tubes

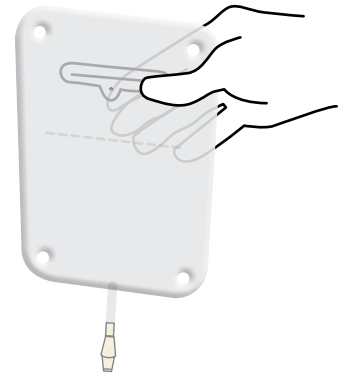
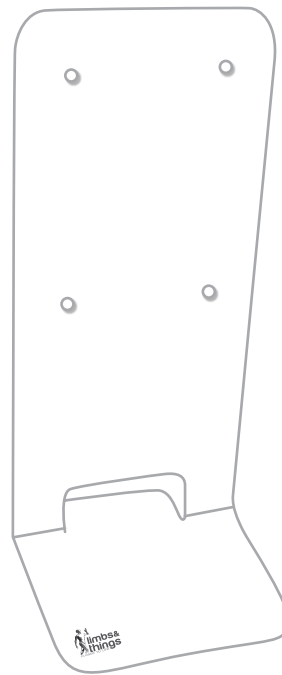
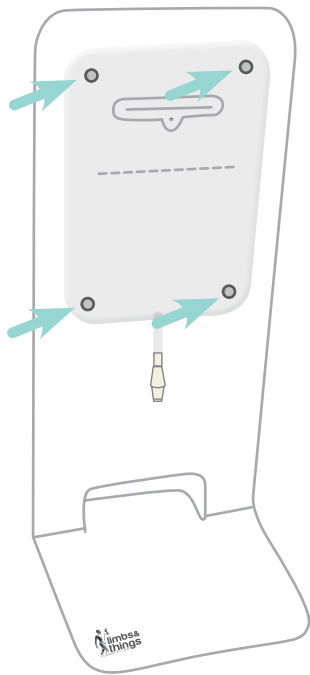


The silicone tube with connector now needs to be attached to the blue buttoned connector



CARE & MAINTENANCE

REMOVING/RE-ATTACHING THE FLUID BAG



Clean off any ultrasound gel with a damp, soft cloth, using only warm water and mild detergent.

YOU MAY
ALSO BE
INTERESTED IN...

SONON
ULTRASOUND
IMAGING SYSTEM
LINEAR

HC300L



SHOULDER
INJECTION
TRAINER -
ULTRASOUND
GUIDED

70202 **70221**

