

A Adam, Rouilly

AR503 – AR503/50

Enhanced Digital Eye

Examination / Retinopathy Trainer

Product Leaflet

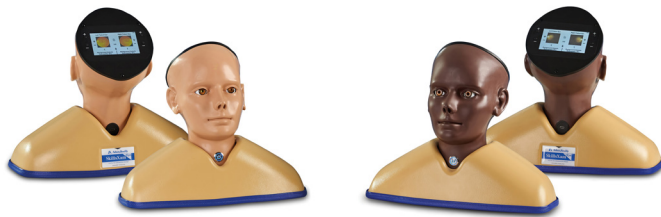


Enhanced Digital Eye Examination / Retinopathy Trainer



AR503

AR503/50



Developed in collaboration with **Professor Vinod Patel**, Professor, Diabetes and Clinical Skills, the Enhanced Digital Eye Examination Trainer takes ophthalmoscopy training to a new level of realism and inclusivity.

For the first time, advanced digital technology allows trainees to experience how the same eye condition can present differently in patients with light and dark skin tones. In darker-skinned patients, deeper pigmentation in the fundus reduces vessel visibility, a nuance replicated only in the AR503/50 Dark model. This provides learners with invaluable exposure to the clinical variations they will encounter in real practice, enhancing both competence and confidence. Offering two product versions enables trainees to gain an awareness of these visible variances.

Inside the model, conditions are displayed with greater clarity and true-to-life colour on high-resolution circular LCD screens. A 4.3-inch external touchscreen interface makes operation intuitive and effective, allowing users to preview, search, and select conditions or build customisable sets for teaching, self-directed learning, or examination scenarios.

The Enhanced Digital Eye Examination Trainer delivers an authentic, adaptive, and inclusive learning experience, redefining the standard in ophthalmoscopy training.

The trainer is available with our Enhanced Digital Ear Trainer as an educational set – please see **Page 24**.

Features

- Condition Library: browse names and image previews for all 36 eye conditions
- Search Function: instantly locate a condition for teaching or self-directed study
- Random Mode: display conditions in a varied sequence to keep learners interested
- Custom Sets: select up to 10 specific conditions in any order, for focused teaching or assessments
- Exam Mode: hide condition names and numbers for authentic test conditions. Sleep Mode is automatically disabled for uninterrupted practice
- Lock Mode – displays the last selected condition for both left and right patient eyes
- Compatible with battery or USB-C mains power
- Intelligent sleep mode for power saving (automatically cancelled in Exam Mode)

Includes

- Rigid Carrying Case
- Shoulder Base
- USB-C Mains Adaptor with Worldwide Plug Fixings
- Instruction Manual

Digital Eye Conditions

Eye conditions and diseases presented digitally for the light skin toned patients **AR503** and dark skin toned patients **AR503/50**:

Diabetic Retinopathy:

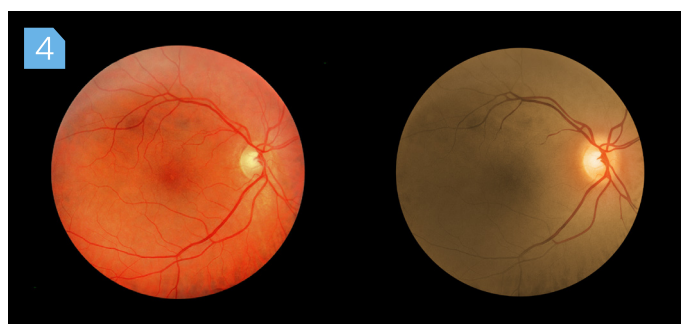
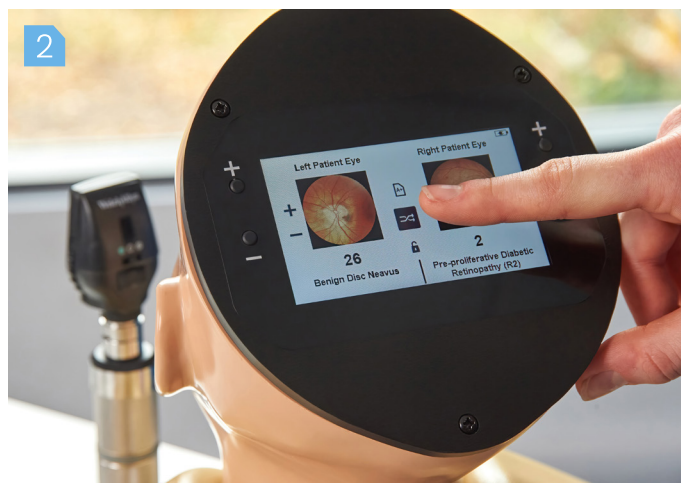
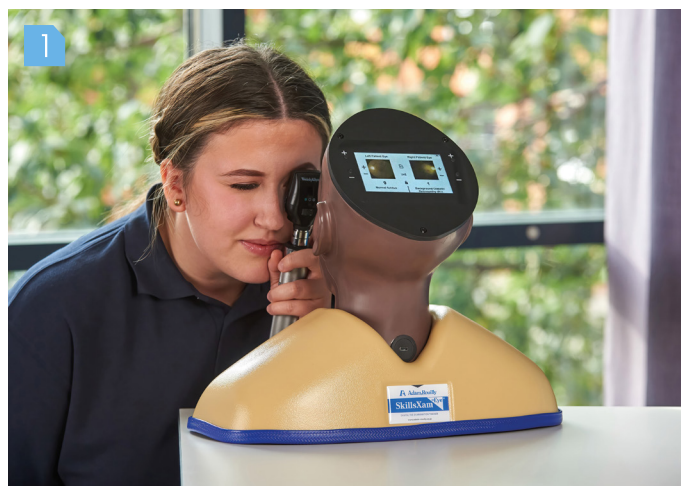
- | | |
|---|--|
| 1 Background Diabetic Retinopathy (R1) with Maculopathy (M0) | 5 Diabetic Maculopathy (M2) |
| 2 Pre-Proliferative Diabetic Retinopathy (R2) | 6 Diabetic Maculopathy (M2) with Laser Photocoagulation (P1) |
| 3 Proliferative Diabetic Retinopathy (R3) | 7 Laser Photocoagulation (P1) with Proliferative Diabetic Retinopathy (R3) at the Optic Disc |
| 4 Proliferative Diabetic Retinopathy - New Vessels on Optic Disc (R3) | 8 Ungradable - Proliferative Retinopathy Likely - (R3) |

Important / Common Retinal Conditions :

- | | |
|---|--|
| 9 Normal Fundus (Optic Disc and Retina) | 16 Central Retinal Artery Occlusion (CRAO) |
| 10 Glaucoma | 17 Drusen |
| 11 Papilloedema | 18 Retinitis Pigmentosa |
| 12 Optic Atrophy with Macular Scarring (and Glaucoma) | 19 Myelinated Nerve Fibres |
| 13 Early Dry Age-Related Macular Degeneration | 20 High Myopia |
| 14 Hypertensive Retinopathy: Grade 2 | 21 Branch Retinal Vein Occlusion (BRVO) |
| 15 Central Retinal Vein Occlusion (CRVO) | 22 Pre-Retinal Haemorrhage |

Important / Less Common Retinal Conditions :

- | | |
|----------------------------------|---|
| 23 Multiple Retinal Haemorrhages | 32 Lipaemia Retinalis with Proliferative Diabetic Retinopathy |
| 24 Retinal Detachment | 33 Medusa Head Optic Disc (This is Normal Variant) |
| 25 Angioid Streaks | 34 Myopic Crescent - Normal Choroidal Vessels |
| 26 Benign Disc Neavus | 35 A Resolving Pre-Retinal Haemorrhage |
| 27 Malignant Melanoma | 36 Macular Burn with Peripheral Burn with Scarring |
| 28 Macular Haemorrhage | |
| 29 Choroidal Naevus | |
| 30 Macular Scar (Toxoplasmosis) | |
| 31 Cytomegalovirus Retinitis | |



- 1 Flexible Training for Self Directed or Assessment Scenarios
- 2 Search, Randomise, or Display Conditions in Custom Sets
- 3 Lock Mode Displays Last Selected Condition for Both Eyes
- 4 Normal Fundus Shown in Light and Dark Skin Tone Models (Dark Skin Tone Fundus Represented Only on AR503/50)

Safety in Training, Safety in Practice

Adam,Rouilly Limited, Castle Road, Eurolink Business Park,
Sittingbourne, Kent, ME10 3AG, United Kingdom

UK

+44 (0)1795 471 378
uksales@adam-rouilly.co.uk

Export

+44 (0)1795 411 064
sales@adam-rouilly.co.uk

Adam,Rouilly has over 100 years of experience in providing quality medical models and simulators.

As part of our policy of continuous product development, the specifications of our products may change without prior notice.

Should you require further information, please contact our Sales Department, who will be pleased to assist you with your enquiry.

www.adam-rouilly.co.uk



©Copyright 2026 **L0503 LI**