

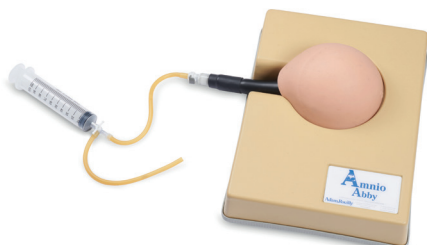
A Adam, Rouilly

AR60

Amnio Abby®

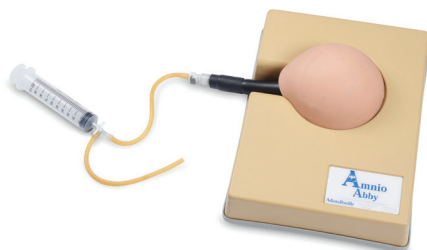
Ultrasound Guided Invasive Procedures Simulator

Product Leaflet





AR60



Adam, Rouilly, in collaboration with **Dr Graham Tydeman**, Consultant in Obstetrics and Gynaecology, NHS Fife, Professor **Andy Shennan OBE**, Tommy's Chair in Maternal and Fetal Health, and **Dr Annette Briley**, Professor of Women's Health & Midwifery Research, Flinders University and Northern Adelaide Local Health Network, has developed a simulator to advance training in ultrasound-guided amniocentesis and chorionic villus sampling (CVS).

The Amnio Abby® provides a realistic sonographic representation of a 15-week pregnancy, offering a safe, controlled simulation setting for clinicians to refine invasive techniques.

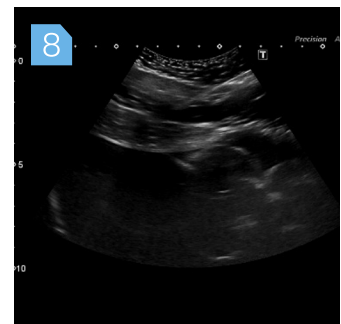
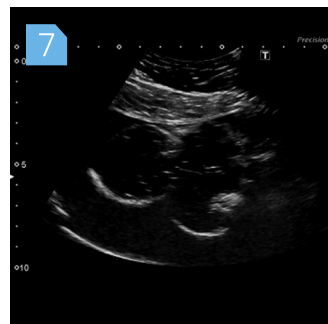
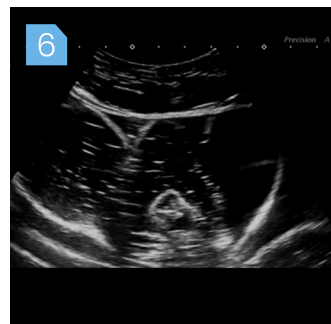
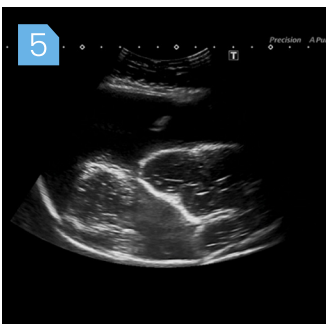
As Non-invasive Prenatal Testing (NIPT) reduces hands-on opportunities, the model supports ongoing skill development, helping practitioners build confidence and maintain competency in advanced obstetric procedures.

Skills

- Range of procedures from basic to advanced by varying fetal position, abdominal layers, amniotic fluid volume and placental placement
- Ultrasound visualisation of abdominal wall, placenta, fetus, umbilical cord and amniotic fluid
- Identification of appropriate needle entry points
- Real-time ultrasound monitoring of needle path
- Withdrawal of simulated amniotic fluid sample
- Transplacental needle approach with adjustable placenta and amniotic volume
- Simulation of chorionic villus sampling (CVS)
- Team planning and coordination before, during and after invasive procedures
- Training in patient communication

Features

- Easy to use with minimal maintenance
- Produces a highly realistic sonographic image
- 15-week fetus with visible umbilical cord insertion
- Puncturable amniotic sac, allowing multiple procedures before replacement
- Variable fluid volume to simulate easier or more challenging scenarios
- Separate placenta for anterior/posterior positioning, supporting transplacental and CVS training.
- Dual abdominal layers to replicate patients with higher BMI



- 1 Variable Amniotic Fluid Liquor Volume
- 2 Separate Placenta for Transplacental Scenarios
- 3 Two Abdominal Wall Layers to replicate Higher BMI
- 4 Realistic Feel and Sonographic Experience

- 5 Easy Amniocentesis: One Abdominal Wall Layer, Normal Liquor Volume
- 6 Difficult Amniocentesis: One Abdominal Wall Layer, Reduced Liquor Volume
- 7 Easy CVS: One Abdominal Wall Layer, Anterior Placenta
- 8 Difficult CVS: Two Abdominal Wall Layers, Anterior Placenta

Includes

- Abdominal Layers (x2)
- Carrying Case
- Fetal Sac with 15 Week-old Sized Fetus and Umbilical Cord
- Sac Filling Syringe and Tubing
- Separate Placenta
- Instruction Manual

Spares & Repairs

- SPAR60 Replacement Fetal Sac for AR60

Safety in Training, Safety in Practice

Adam,Rouilly Limited, Castle Road, Eurolink Business Park,
Sittingbourne, Kent, ME10 3AG, United Kingdom

UK

+44 (0)1795 471 378
uksales@adam-rouilly.co.uk

Export

+44 (0)1795 411 064
sales@adam-rouilly.co.uk

Adam,Rouilly has over 100 years of experience in providing quality medical models and simulators.

As part of our policy of continuous product development, the specifications of our products may change without prior notice.

Should you require further information, please contact our Sales Department, who will be pleased to assist you with your enquiry.

www.adam-rouilly.co.uk



©Copyright 2026 **L0060 L1**