

TruWound User Manual



TruWound is a realistic gunshot wound model with a pressure blood supply system to simulate severe haemorrhaging.

It allows realistic wound packing training techniques with visual feedback when the correct pressure is applied to the packed wound.

The pressurized blood system allows the instructor to control blood flow to either 1, 2 or all 3 wounds at once, making it ideal for a fast-paced classroom environment.

Contents

Product specifications.....	2
Package contents.....	2
Recommended equipment	2
Initial Set-Up.....	3
TruWound – How to use	4
Fluid Reuse/Removal	6
Care and Maintenance.....	6
Warranty	7

Product specifications

Product Code: TWO1000

TruWound weight: Approx. 1.8kg

TruWound dimensions: 10 x 10 x 8cm

Full shipment weight: Approx. 3.7kg

Full shipment dimensions: 47 x 27 x 34cm

Package contents

- 1x TruWound Model (includes x3 Individual Wounds)
- 1x TruWound Carrier Case
- 1x Pressure Pump (MAX 2 litres) + Tubing
- 3x Blood Collection Containers
- 1x Concentrated Blood 250ml (CVB250)
- 1x Plastic Refill Funnel

Recommended equipment

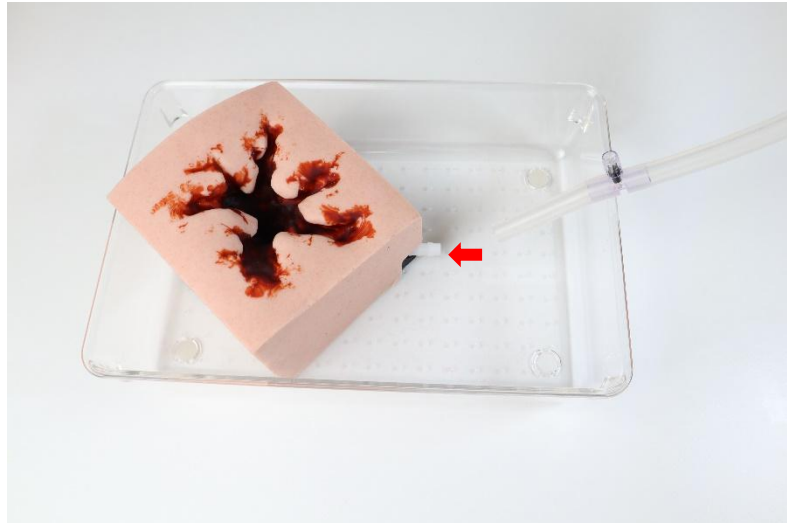
- Packing Gauze

Initial Set-Up

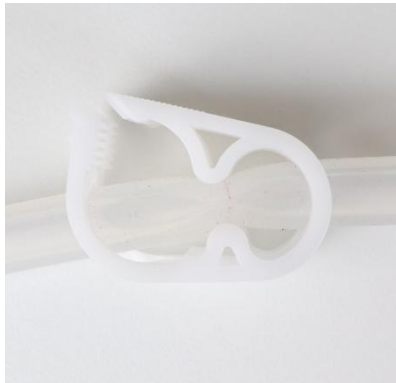
1. Unpack the product. Prepare 2L of water/fake blood solution and pour into the pump container. Ensure the lid is tightened and secured before beginning.



2. Place each wound in the tray provided and connect the tubing attached to the pump.



3. If you wish to use all wounds at the same time, make sure all the blue pinch clamps are opened. (You can close the pinch clamps by pressing it against the tube for the wound you will not use during the training). The product is now ready to use.



OPEN



CLOSED

TruWound – How to use

1. Start pressurizing the pump (white arrows in below image). Release the sprayer handle to allow continual blood flow through the tubing.

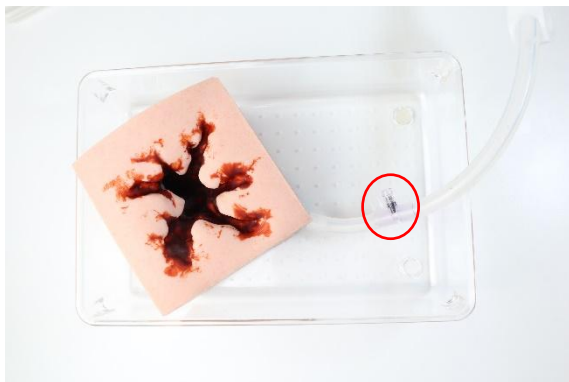
Recommended initial number of pumps for 2L of liquid:

- 1 Wound in use: 5 – 7 pumps
- 2 Wounds in use: 7 – 10 pumps
- 3 Wounds in use: 10 – 13 pumps

Please note to keep continual flow additional pumps may be required during the procedure.



2. Pack the wound using the appropriate gauge and techniques required. Ensuring to apply pressure on the packed wound to prevent further bleeding. When the correct packing and pressure applied is optimal, the wound will stop bleeding and blood will begin to drip from the release valve (shown below in the red circle). Keep the valve pointing to the side as seen below.



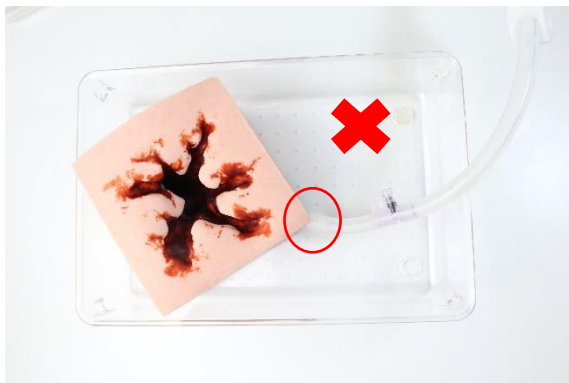
3. To stop the flow of the liquid from the pump, unlock and release the sprayer handle.

Fluid Reuse/Removal

If performing consecutive training sessions, the blood collected in the containers can be reused. A funnel is provided to return the liquid back from the collection containers to the pump. Please note to replace the fluid if it becomes dirty as this can cause blockages in the pump/nozzle.

To avoid mould build up it is recommended to introduce a sterilisation fluid as a mixture with the concentrated blood.

Once the session is complete, dispose of the fluid in the collection trays and empty the pump. Pressurise the empty pump to flush the remaining fluid out of the tubing and then disconnect the wounds from the tubing at the valve and not the base of the wound.



Make sure to dry all parts of the product and pack in the carrier bag to ensure the quality of the products are maintained. It is important to remove all fluid before storage or transportation.

Care and Maintenance

Store the product in clean, dry conditions away from heat and direct sunlight; avoid contact with metals, solvents, oils or greases and strong detergents. When the product is not in use, please store in the black carrier case provided.

Clean the product with alcohol wipes or other alcohol based cleaner and gently wipe with a cloth. Do not scrub as it may cause the paint to wear. Make sure to completely dry the product before storing to prevent mould and fungal built-up.

Mild detergents or enzymatic cleaning agents may be used on the product in accordance with the manufacturer's instructions and at the proper dilution. The detergent must not contain

skin or mucous membrane irritants. We recommend using Milton sterilising fluid to remove any bacteria within the tubes.

Please *do not* use any of the following when cleaning the product:

- Germicides, disinfectants, or chemical agents such as glutaraldehyde (e.g. Cidex®),
- Ethylene oxide, phenol-based cleaners or iodine-containing cleaners

In response to the recent COVID-19 pandemic, we recommend this additional step to ensure the product is fully sanitised:

Use alcohol spray (minimum 75%) and wipe off. Repeat this for 3-4 times to ensure to kill the virus completely.

Warranty

TruCorp warrants this product to be free from defects in materials and workmanship, ensuring satisfactory performance for a period of one year from the date of delivery. This warranty provides customers with maximum coverage for each unit.

If a product malfunctions and is confirmed to be defective under warranty, TruCorp will repair or replace it at no cost. However, the warranty is void if the unit shows signs of tampering, excessive heat exposure, damage from sharp instruments, improper use, or any conditions beyond TruCorp's control. Consumable items such as wrap-around neck skins and larynx inserts are not covered under warranty and will not be replaced. Damage resulting from misuse is not covered and may incur additional charges.

For full terms and conditions, visit: [TruCorp Warranty Policy](#)

Please direct all warranty and repair inquiries to:



TruCorp Ltd

33 Waringstown Road

Lurgan, Co. Armagh

BT667HH

N. Ireland

Email: info@trucorp.com

Tel: +44 (0) 28 3888 2714