



**Adam, Rouilly**

SERVING MEDICAL EDUCATION WORLDWIDE

## AR150/A150-B STOMA CARE TORSO

Instruction Manual



Thank you for purchasing this AR150 Stoma Care Torso.

Please read this instruction manual carefully and retain it for future reference.

## Skills

- The Stoma Care Torso is designed to train healthcare professionals involved in caring for patients with a colostomy, ileostomy or urostomy
- An invaluable tool also for patient self-training

## Features

- Simple to set up and use
- Supplied with five different types of stoma which are easily interchangeable
- Compatible with most barrier creams and films
- Dressings and plasters can be applied to the torso repeatedly

## Safety and Precautions



Always remove stomas from the torso after use and replace in the supplied storage box. Do not store with stomas still in place. Failure to remove stomas from the torso could cause accelerated wear.



Do not leave or store the torso with dressings or barrier films applied. Always wipe down the torso after each training session.

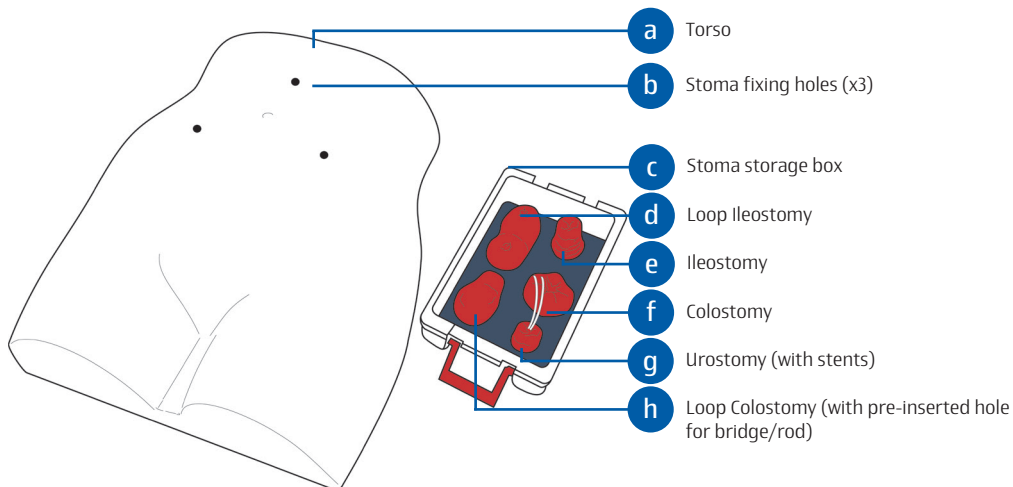


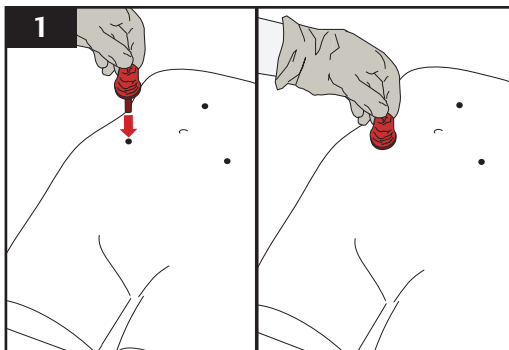
A stoma bridge/rod is not supplied with this simulator as choice of device varies according to local policy.



Please treat the simulator with the same care you would a patient.

## Parts

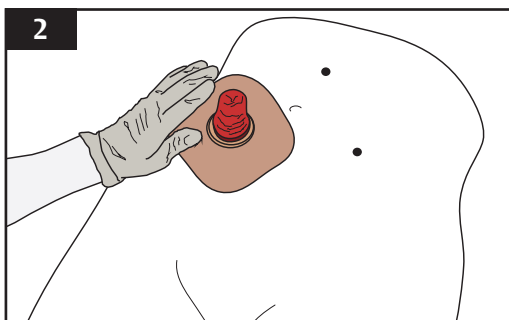




## Before Use

Remove the desired stoma from the storage box and insert the plug into one of the stoma fixing holes on the torso.

Press down so that the base of the stoma sits flush with the torso.

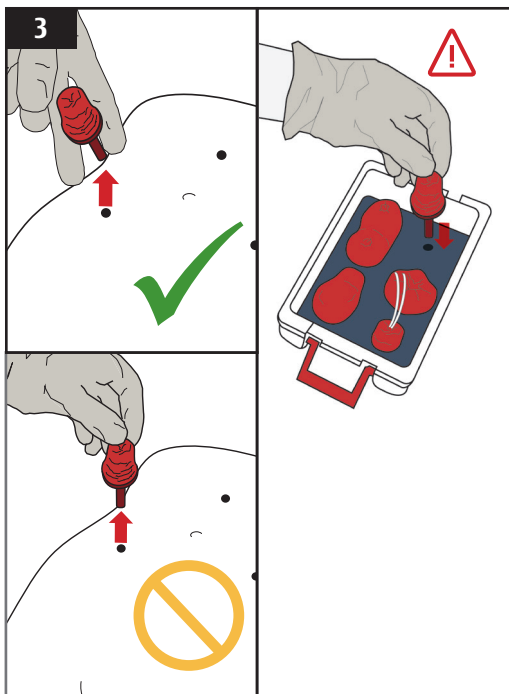


## During Use

The torso is compatible with most barrier creams and films.

Dressings and plasters can be applied to the torso repeatedly.

Wiping the torso with alcohol may aid adhesion for some dressings.



## After Use

Remove all dressings and stoma appliances.

✓ Remove stomas by gently lifting from underneath the rigid stoma base, as illustrated.

⊘ Never pull on the stomas themselves to remove, as this can cause damage.

Place stomas back in the supplied storage box.

Clean off any remaining adhesive residue or barrier creams from the torso.

⚠ Always remove stomas from the torso after use and replace in the supplied storage box. Do not store with stomas still in place. Failure to remove stomas from the torso could cause accelerated wear.



Scan the QR code to access the product video  
<https://youtu.be/GFzZM-H5bKI>



## 2 Year Guarantee



All products manufactured by Adam,Rouilly are covered by our full 2 Year Guarantee. This guarantee applies to models which have been used correctly and covers durability and functionality.

# Adam,Rouilly

As part of our policy of continual product development, the specification of products may alter without prior notice.

Adam,Rouilly has over 100 year's experience in providing quality medical models and simulators.

Should you require any further information please contact our Sales Department who will be pleased to help with your enquiry.

Adam,Rouilly Limited  
Castle Road  
Eurolink Business Park  
Sittingbourne  
Kent  
United Kingdom  
ME10 3AG

T: +44(0)1795 471378  
E: [sales@adam-rouilly.co.uk](mailto:sales@adam-rouilly.co.uk)  
[www.adam-rouilly.co.uk](http://www.adam-rouilly.co.uk)