

# Adam, Rouilly

SERVING MEDICAL EDUCATION WORLDWIDE

## AR18 INTRAMUSCULAR INJECTION SIMULATOR

### Instruction Manual



Thank you for purchasing this AR18 Intramuscular Injection Trainer.

Please read this instruction manual carefully and retain it for future reference.

## Skills

- Intramuscular injection
- Patient communication
- Administering of fluid injections e.g. vaccination

## Features

- Simple to set up and use
- The injection pad is moulded from a specially selected grade of silicone to improve feel and durability
- The injection pad has self sealing characteristics that can be penetrated many times, enhancing durability
- Accepts fluid injections

## Safety and Precautions



If liquid injections are administered, we recommend using only water. After use, the base foam layer must be removed, emptied and allowed to dry.

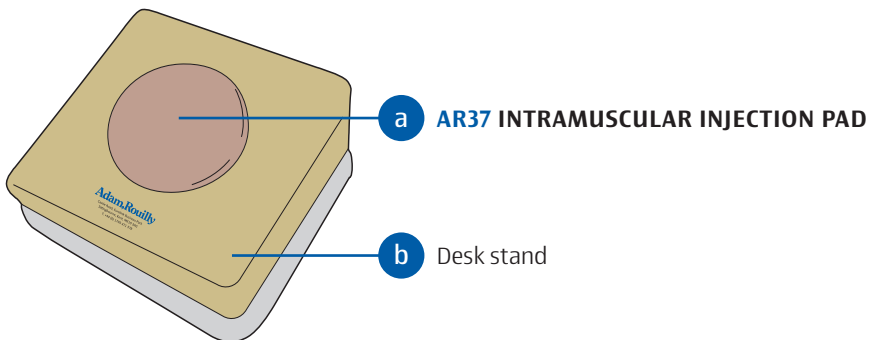


The injection pad is a disposable item and will need to be replaced periodically.

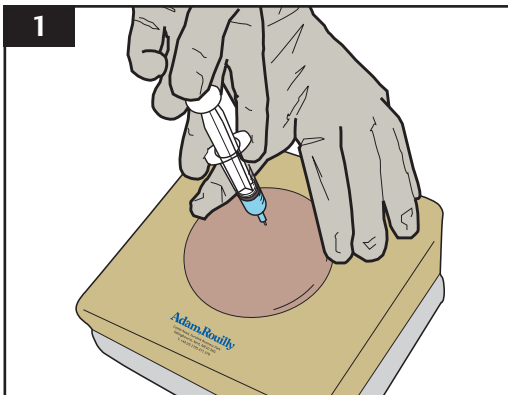


Please treat the simulator with the same care you would a patient.

## Parts



If you require replacement parts please contact our Sales Department, quoting codes where applicable.



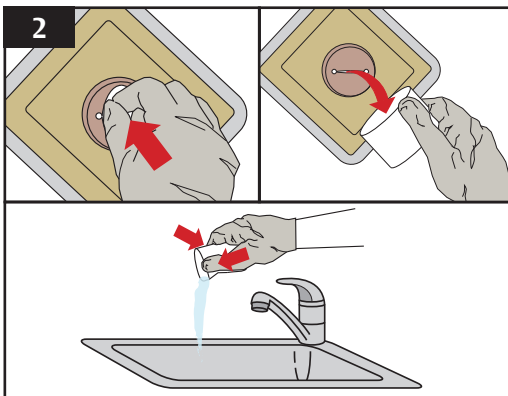
## During Use

Place the model on a stable, flat surface.

Intramuscular injections may be administered directly into the injection pad.

Mock liquid injections may also be administered - we recommend using only water.

**!** If liquid injections are administered, the base foam layer must be removed, emptied and allowed to dry after use.

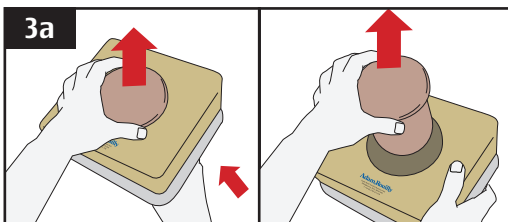


## After Use

If liquids have been injected, remove the base foam layer from the injection pad to drain and dry out.

Grasp the foam layer through the access at the bottom of the injection pad, on the underside of the model.

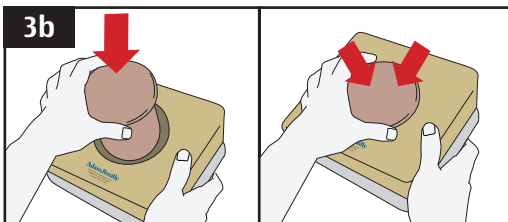
Gently squeeze the foam over a sink or container to remove excess liquid. Allow to dry, refit by inserting the dry foam layer through the access at the bottom the injection pad.



## Injection Pad Replacement

**3a** The injection pad is a disposable item and will need to be replaced periodically.

First, remove the old injection pad by pulling it from above and out of the desk stand. If necessary apply some pressure to bottom of the pad from underneath and push out.



**3b** Reverse this procedure to fit the replacement injection pad, ensuring the new pad fits securely in the desk stand.



Scan the QR code to access the product video  
<https://youtu.be/uV7luYwfFCs>



## 2 Year Guarantee



All products manufactured by Adam,Rouilly are covered by our full 2 Year Guarantee. This guarantee applies to models which have been used correctly and covers durability and functionality.

# Adam,Rouilly

As part of our policy of continual product development, the specification of products may alter without prior notice.

Adam,Rouilly has over 100 year's experience in providing quality medical models and simulators.

Should you require any further information please contact our Sales Department who will be pleased to help with your enquiry.

Adam,Rouilly Limited  
Castle Road  
Eurolink Business Park  
Sittingbourne  
Kent  
United Kingdom  
ME10 3AG

T: +44(0)1795 471378  
F: +44(0)1795 479787  
E: [sales@adam-rouilly.co.uk](mailto:sales@adam-rouilly.co.uk)  
[www.adam-rouilly.co.uk](http://www.adam-rouilly.co.uk)