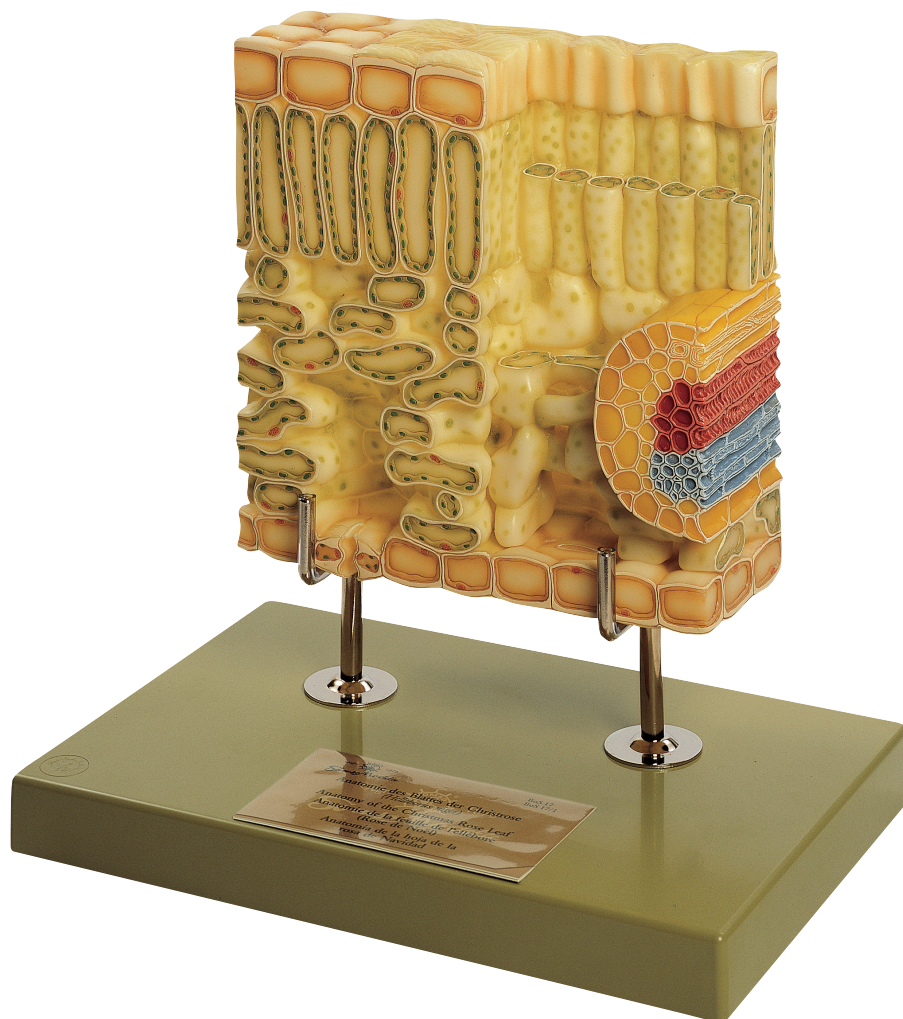


Botany

Angiosperms

(Dicotyledonous Plants)

Nature is our Model



BoS 17/1 • SECTION THROUGH A CHRISTMAS ROSE LEAF

Helleborus niger, enlarged 700 times, in SOMSO-PLAST®. After Prof. Dr. W. Weber. The model shows the upper epidermis with cuticula, the assimilatory parenchyma (differentiated in palisade and spongy tissue with vascular bundle) and the lower epidermis with stomata. In one piece, on a stand with green base. Height: 40 cm, width: 39 cm, depth: 26 cm, weight: 3.72 kg