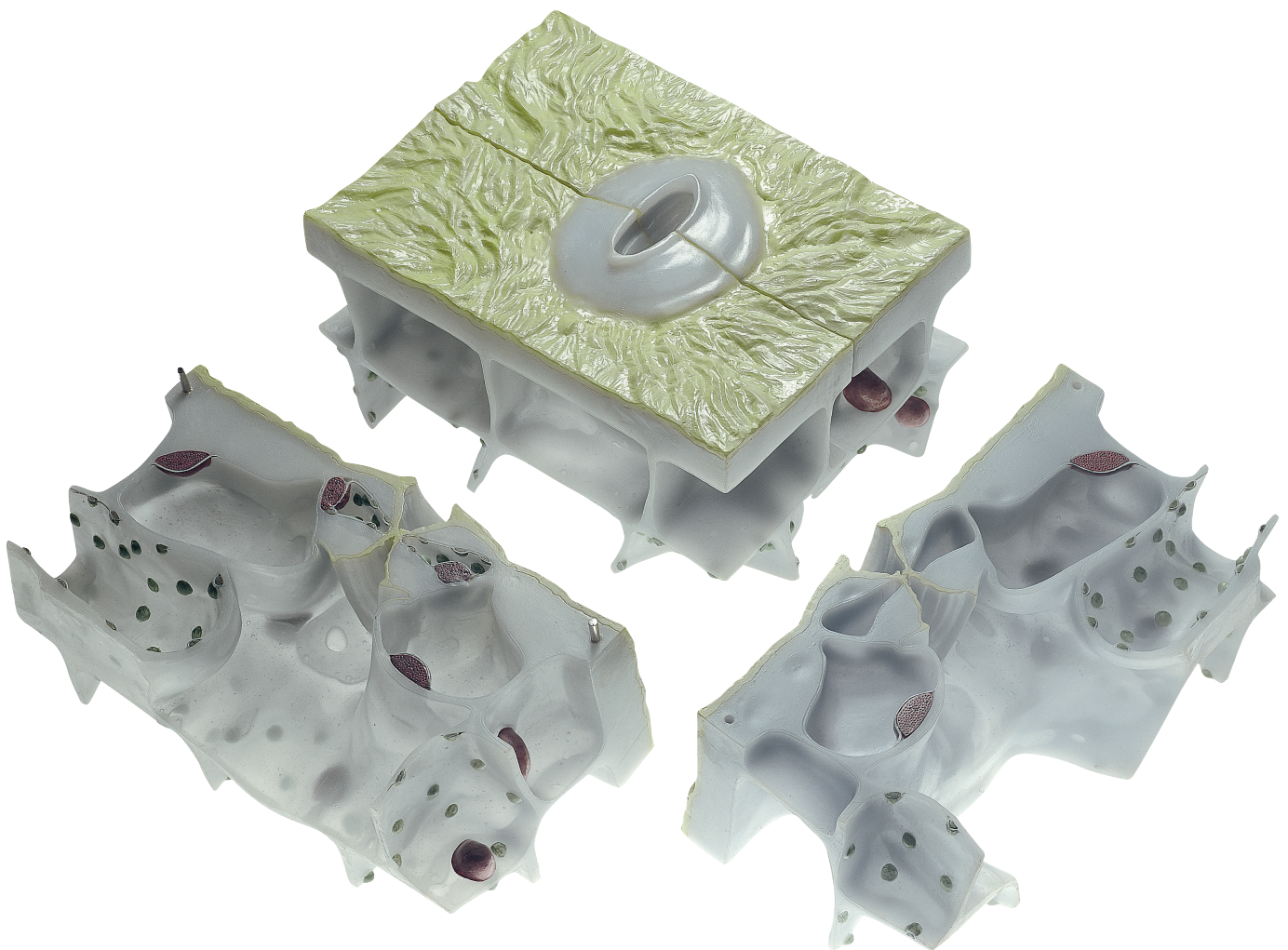


# Botany

Angiosperms

(Dicotyledonous Plants)

Nature is our Model



## BoS 17/2 • STOMA FROM THE LOWER SURFACE OF A CHRISTMAS ROSE LEAF

*Helleborus niger*, many times enlarged, in SOMSO-PLAST®. After Dr. Gerlach, Botanical Institute Erlangen. Shown are guard cells, subsidiary cells, respiratory cavity. One half of the model shows the stoma, the other the function which can be demonstrated symbolically. Separable into 2 parts.

Height: 21.5 cm, width: 39 cm, depth: 28 cm, weight: 5.1 kg