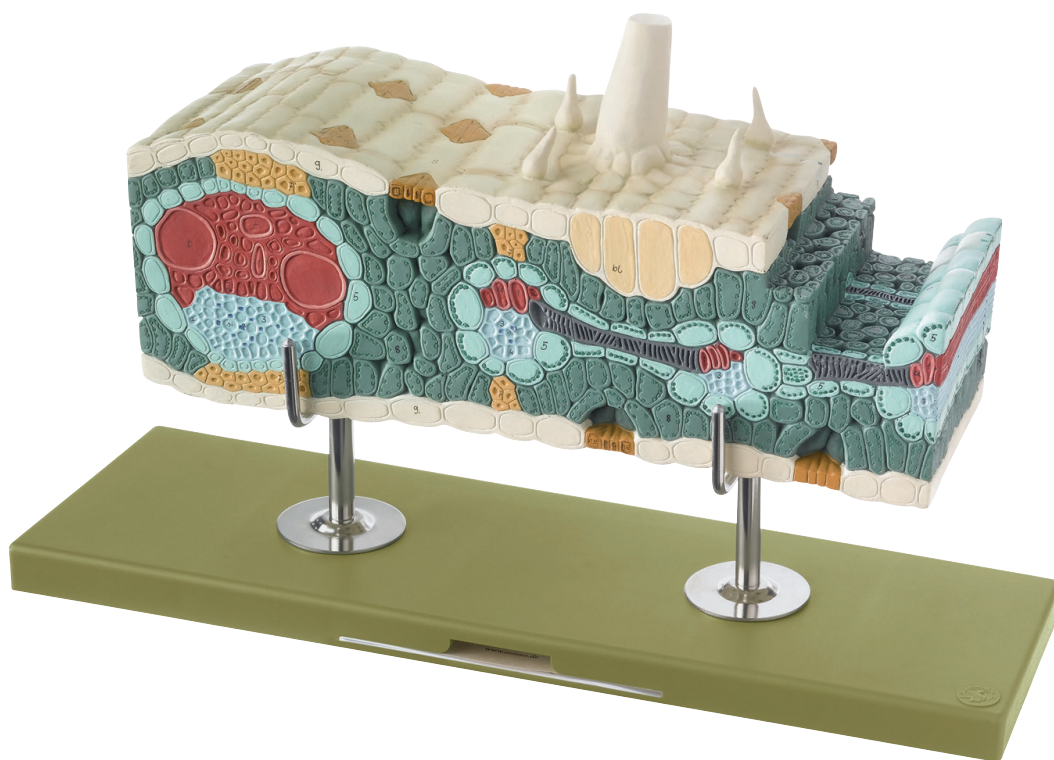


Botany

Angiosperms

(Monocotyledonous Plants)

Nature is our Model



BoS 17/3 • MAIZE LEAF IN LONGITUDINAL AND CROSS SECTION

Zea mays, enlarged approximately 450 times, in SOMSO-PLAST®. After Prof. Dr. W. Weber.

The model shows the special leaf structure of a C4 plant. The vascular bundles are enclosed by a sheath in ring form. Reflecting the biochemical work distribution during photosynthesis, the chloroplasts of the sheath are significantly larger than the chloroplasts of the mesophyll cells. The vascular bundles are interlinked with each other by transversal anastomoses. In one piece, on a stand with green base.

Height: 28.5 cm, width: 48 cm, depth: 15 cm, weight: 2.2 kg