

Zoology

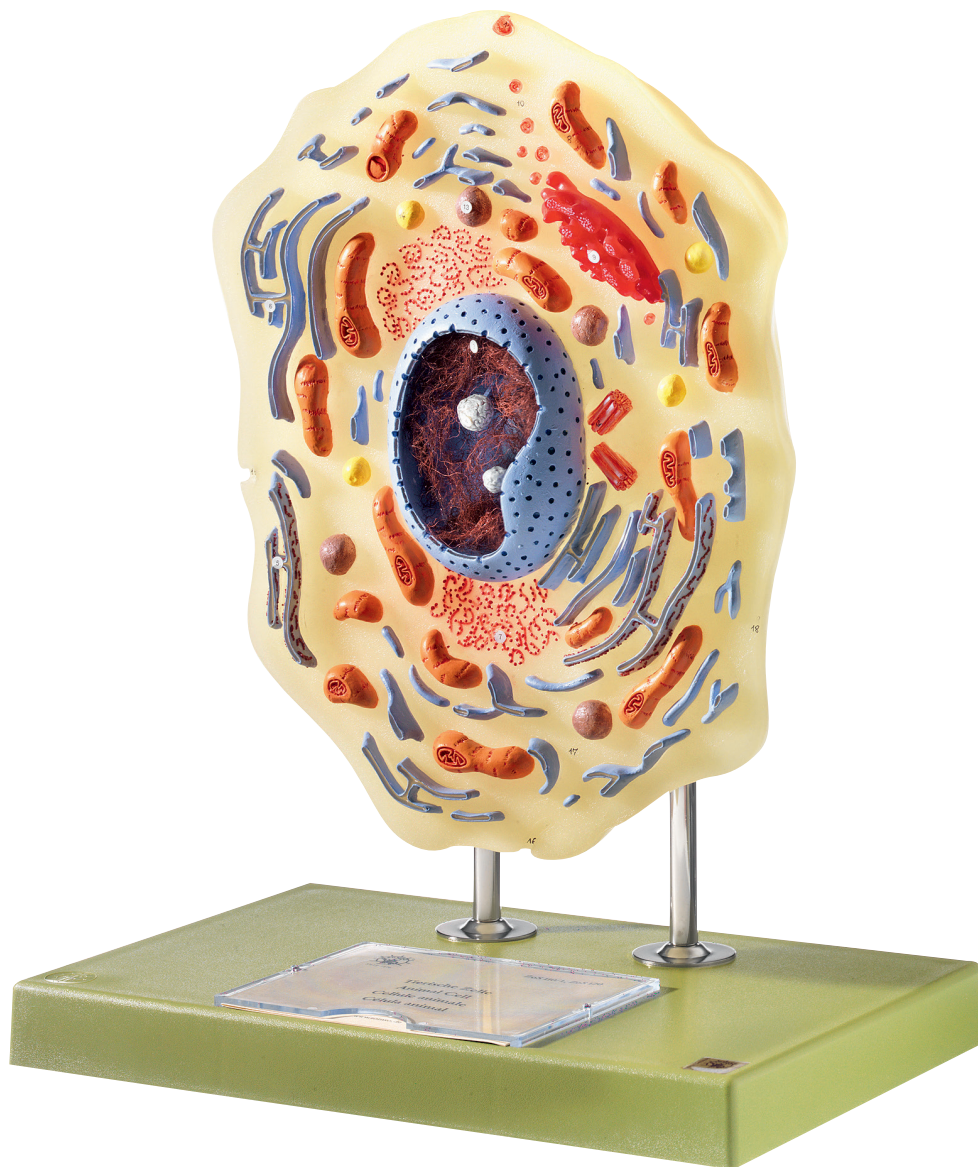
Animal Cell Genetics

Development of Animals

Nature is our Model



SINCE 1876



ZoS 120 • ANIMAL CELL

Scale: 2,000:1, in SOMSO-PLAST®. After Christian Groß, Director of Studies. The model shows the fine structure of an animal cell. Area of application: Extended cell examination. Cannot be disassembled, on a stand with green base. Height: 52 cm, width: 39 cm, depth: 26 cm, weight: 3.9 kg